A photograph of two young children, a girl with long brown hair and a boy with short brown hair, both wearing white long-sleeved shirts, lying on a light brown carpeted floor. They are looking down at a small wooden box that is open, revealing a dark interior. The girl is on the left, and the boy is on the right. The background is slightly blurred, showing white curtains.

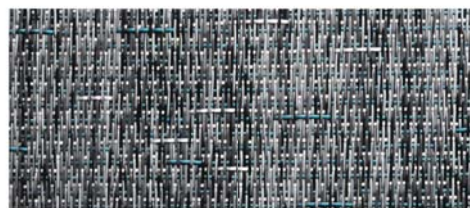
ADDA is the ideal woven vinyl fabric floor, that will cover your flooring needs for good! It is the best alternative to traditional carpets, wooden and marble floors, because it offers so much more.

ADDA is... Strong, durable. soft and comfortable. Easy to apply, clean and maintain. Sound absorbing. Flame retardant and anti-slippery. Long lasting colours. Unique feel and modern look. Recyclable materials, environmentally friendly and antibacterial. All-weather, ideal for indoors or outdoors. And last but not least, it is both affordable and money saving as it is warm in winter and cool in summer!

ADDA[®]
FLOORING



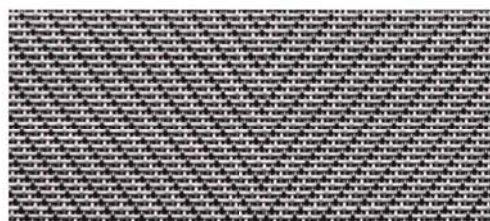
PETTLE : 2301



POWDER 1301



SLACK 5290



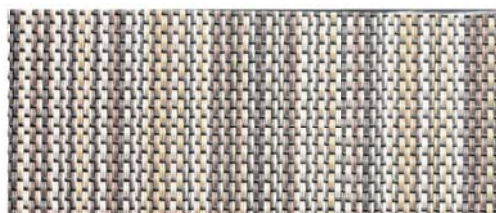
GRAFFITI 3201



GEORGE 9290



SKETCH 4201



BESAME 4290



ANTIACID 1401



BEYONCE 3290



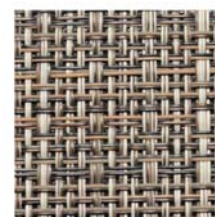
CHESTER 2190



TRIMSON 9190



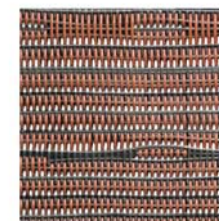
CURIOS 1101



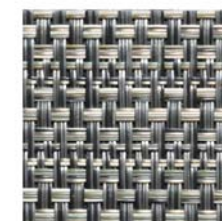
HARWARD 4190



AJWAN : 2201



KOCRY :6290



KATINA :2290



TRACK 2090



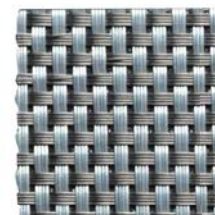
STRETCH 1024



WOOD : 5101



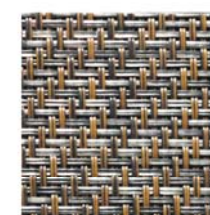
TIERRAKOTA 5190



TITAN 3190



TRIO 8190



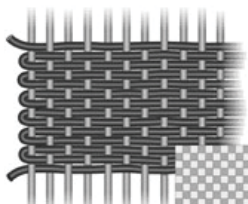
TWINS : 0390



MILOW 6190

You should know about our Adda Vinyl Flooring products.

Introduction: The weave of Adda Vinyl Flooring will not run parallel to the cut edge, therefore any wave, bow or skew in the products is normal due to the way of woven. The tolerance for bow and skew is max 3.8cm (1.5m width) or 5cm (2m width) in either direction. Some patterns will also exhibit a light and dark shading in the material, that is also normal. This shading is also evident at the seams where two pieces of the same style may have a different shade.



You may find some white threads going out of the border, this is normal occurrence, simply cut the by scissors, it will not effect



Installation:

SubFloor preparation:

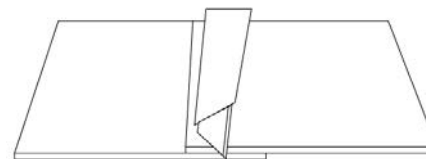
The floor need to be clean, no crack and oil stain free, pressure resistant and durable dry. Appropriate preparation is essential for a good result. The surface is treated with a primer, followed by the application of a leveling compound. This compound is grinded and vacuum cleaned. Take heed, depending on the construction of the floor, of the allowed residual humidity and possible rising moisture. If necessary, apply a damp screen.

Floor Preparation: Roll the Adda Vinyl Flooring floor covering out, overlapping for about 5 cm and leave 24 hours to acclimatize. Always lay all the rolls in the same direction. Avoid crosscut seams and use transition profiles if this can not be prevented.

When laying several rolls in the same room, the rolls must be the same batch.

To obtain the best results, 48 hours acclimatization is advised and during installation the temperature should not be lower than 15 degrees Celsius and the relative humidity not higher than 80%.

Seams: To cut the seams, trim the first carpet lane 2 mm from a line or the tip of the design with a straightedge. The first lane is laid over the second lane and serves, after matching the design, as a guide to cut the second strip. Seams in references with an all over design can be double cut.



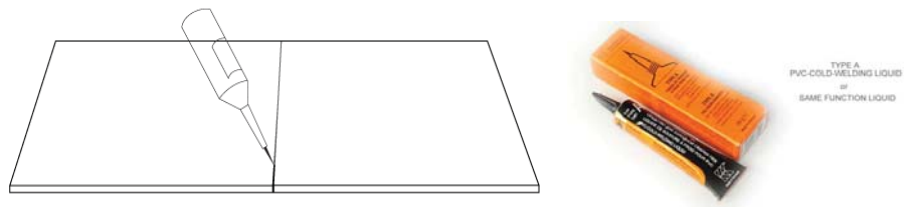
Adhesive application: The carpet is to be bonded to the entire surface using suggested glue. Certain glues cause plasticizer migration often resulting in claims; these are not covered by our warranty. Respect the processing instructions of the manufacturer or contact your supplier.



Fold the lanes back over half of their length (or width) draw a line as start for the glue application. Lay the floor in the wet glue and rub with a cork beam from the center to the edges to remove all air bubbles. It is important to close the seams very well. During the drying time of the glue indoor conditions have to remain constant.

Welding of the seams:

It is necessary to weld the seams, we suggest to use a cold welding system of the Werne Muller brand, type A.



Initial use:

It is advised not use the floor covering before the glue has hardened completely. During the drying time of the glue indoor conditions have to remain constant. It is absolutely necessary cover the floor immediately after its installation to prevent soiling and damage.

After 12hours start initial cleaning

After 24hours start simple traffic

After 48hours charging with furniture

Cleaning after installation:

After laying: Construction dust (sand, gypsum,) is very abrasive. It should be removed to avoid the danger of creating premature walking lanes. After vacuum cleaning the whole surface is wet cleaned with an injection extraction machine.

Our Adda Vinyl Flooring series products are strong and durable, with correct maintenance (please find the sheet below) they will last long.



| | Type of Stain | Procedure and Removal |
|----|---------------------|---|
| 1 | Acid | Neutralize with ammonia |
| 2 | Adhesive tape | Harden with ice, rub off with fingers |
| 3 | Alcoholic Beverages | Rinse with cold water, immediately followed by white, vinegar, then rinse with cold water |
| 4 | Alkali | Neutralize with vinegar |
| 5 | Blood | Rinse in cold water, then dilute ammonia, sponge with detergent and water, then rinse thoroughly |
| 6 | Butter | Rinse with hot water |
| 7 | Chewing Gum | Apply ice, rinse with cold water, then sponge with Perchloroethylene (spot remover) |
| 8 | Chocolate | Rinse with cold water, sponge with bleach |
| 9 | Coffee | Rinse with cold water, sponge with detergent and water |
| 10 | Egg | Rinse with cold water, sponge with detergent and water |
| 11 | Fruit | If fresh, pour boiling water through stain; if stubborn bleach with hypochlorite or hydrogen peroxide |
| 12 | Grass | Sponge with alcohol, then detergent and water |
| 13 | Ice Cream | Sponge with Perchloroethylene (spot remover) |
| 14 | Iodine | Sponge with alcohol |
| 15 | Ink (Pen) | If fresh, sponge with detergent and water. If dried, sponge with bleach, then oxalic acid (spot remover), and then scrub with detergent and water |
| 16 | Ink (Ballpoint) | Scrub with detergent and water, then rinse. For stubborn stains, use petroleum jelly, then sponge with Perchloroethylene (spot remover). Some inks dissolve in glycerin followed by shampoo |
| 17 | Iron Rust | Sponge with oxalic acid (spot remover), rinse well; or, spread with salt, moisten with lemon juice, then place in the sun |

| | | |
|-----------|---------------|---|
| 18 | Lipstick | Sponge with alcohol or Perchloroethylene (spot remover) |
| 19 | Mildew | Sponge with bleach, followed by water rinse |
| 20 | Milk or Cream | Sponge with Perchloroethylene (spot remover) |
| 21 | Mustard | Apply warm glycerin, wash with sudsy water and Hydrosulfite bleach |
| 22 | Oil | Scrub with detergent and water, sponge with Perchloroethylene (spot remover) |
| 23 | Paint | Scrub with detergent and water, then sponge with Perchloroethylene (spot remover) or with turpentine. If not dried, latex and acrylic paints will wash away |
| 24 | Perspiration | Sponge with peroxide and ammonia, rinse with water. |
| 25 | Sugar | Sponge with hot water |
| 26 | Tar | Moisten with Perchloroethylene (spot remover), scrape off, then sponge residue with same solvent |
| 27 | Tea | Scrub with borax solution and rinse, or keep stain moist With lemon juice, then expose to the sun for a day or two |

For daily maintenance, just wring dry mop the floor with clean and warm water and vacuum cleaning, for a periodic cleaning, please get help from professional cleaning company. Any stains, please remove immediately, otherwise, the stains will penetrate into the floor/wall covering.



Occasionally you can use acetone, citrus, Pine-Sol, strongly alkaline cleaning agents, scouring powder or strong solvents, but using more will damage the floor. Please try to use cleaning agent PH value around 7-8 often. Rinse and mop with at least one additional clean water rinse after applying detergent, as detergent residue will attract soil if not properly rinsed.

The Adda Vinyl Flooring is 5-7 year commercial wear warranty based on careful and correct maintenance, but they are not warranted for use in outdoor locations exposed to full sunlight. The choice of color and pattern influences the maintenance requirements, as does the layout of entrances and staircases.



Furniture must be fitted with pads of stainless steel, Teflon or similar with no sharp edges. (This is required by all kinds of wall to wall carpeting), so it will not hurt the carpet if moving the furniture. Rubber materials (e.g. car tires) can affect the color of t in case of long-term contact. It is therefore advisable to provide special protection in case of frequent contact with rubber materials. . If castor chairs are use it is recommended to provide hard castors.



The Adda Vinyl Flooring can be used for stairs, but it is better to use slip stopper or mold to protect. If Adda Vinyl Flooring carpet is laid near entrances it is important to provide a water and dirt collection system.



The material must be inspected before installation. Do not install flooring with visible defects! Any defects shall be reported to the place of purchase as soon as possible. If the material is deemed defective, We will replace it. Our liability is limited to the replacement of defective material only. Manufacturer is not responsible for cost of removal or reinstallation.



With rolls, depending on the area your waste is between 5 and 10%. This is only a practical rule of thumb and serves as a guideline only. Do not forget to order a small additional quantity to serve as back-up stock for future replacements due to stains, dirt



Some technical data out of our catalogue:

| Characteristies | Test method | Requirements | Results |
|------------------------------|------------------------|---|---------------------------|
| Colour fastness to light | BS EN ISO 105-B02:1994 | General ≥ 5 Pastel shade ≥ 4 | > 6 |
| Rubbing(Wet) Rubbing(Dry) | BS EN ISO 105-X12:2002 | ≥ 3 $\geq 3-4$ | 4/5 4/5 |
| Water (Change in colour) | BS EN ISO 105-E01:1996 | Plain carpets $\geq 3-4$ Others carpets ≥ 4 | 5 |
| Water (Staining) | | All carpets $\geq 2-3$ | 5 |
| Hairiness (pilling) | BS EN 1963 Test D | Assess against photoscale after 200 cycles | > 4.5 (no hairiness) |
| Colour change | Pr EN 15115 & Annex B | Due to spilt water ≥ 4 | 5 |
| | | Due to subsequent soiling ≥ 3 | 5 |
| Dimensional stability | ISO 2551 | Shrinkage $\leq 1.2\%$ in each direction | Max-0.33 |
| | | Extension $\leq 0.5\%$ in each direction | No Extension |

Adda Vinyl Flooring

ADDa is strong Its durability makes it a good choice for high traffic hotels, apartments, commercial and of course residential applications.

ADDa is soft It feels like real textile and provides a soft and comfortable feeling.

ADDa is easy It is easy to apply. Furthermore it is much easier to clean and maintain than carpets.

ADDa is safe It is flame resistant and has much better anti-slip properties than a wooden or marble floor. It can be used unbacked where appropriate or backed for strength and better anti-slip characteristics, or treathed for special applications. The backings can be used to create more durable flame resistant fabrics with different degrees of breathability. The vinyl's DNA is antibacterial.

ADDa[®]
FLOORING

ADDA is quiet Its sound absorbing so you will enjoy the sound of silence at work or rest.

ADDA is fadeless Its is available in o wide range of colours. Moreover it is solution dyed, meaning that the colour is created in the solution before the fibres are extruded. This provides the ultimate long lasting colour. Thus the colour is solid throughout all the fires and yarns created and gives it unsurpassed colours life against fading.

ADDA is perfect It can bu used indoors or outdoors according to your desires.

ADDA is friendly It keeps your place at the desired temperature for a longer time. With WISE at home, or at your business, the heating and air conditioner will work more efficiently,

SAMPLES

The total production process uses low temperatures and nearly zero water.
All excess metarial created during production can be recycled.
Because, we care about the environment as much as we care for your convenience.

ADDA is tailored You can make your own design and colours with a minimum order of 500 m².

(ADDA WOVEN VINYL FLOORING)

ADDA[®]
FLOORING

